



**LIGHTHOUSE**  
WORLDWIDE SOLUTIONS  
Technology That Counts!



## LS-60 Liquid Sampler

Designed with functionality in mind, the **Lighthouse LS-60 Liquid Sampler** is an integrated syringe sampler and optical particle counting system with an easy-to-use Windows™ based software interface.

Following a quality standard of reliability and dependability, Lighthouse Worldwide Solutions developed the **LS-60 Liquid Sampler** using the latest in laser optical particle counter technology. With a Sample Flow Rate of 60mL/min, the **LS-60** provides unprecedented measurement speed and accuracy.

The **LS-60** uses a high accuracy syringe pump flow control system and a high sample volume sensor. It is a perfect tool for multiple batch sampling applications.

The graphical user interface makes the **LS-60** easy to configure and operate. Data is automatically recorded and easily available in graph and tabular form in real time. Reports can be preconfigured and printed at the touch of a key.

**Designed and built by  
Lighthouse - a name you can trust.**

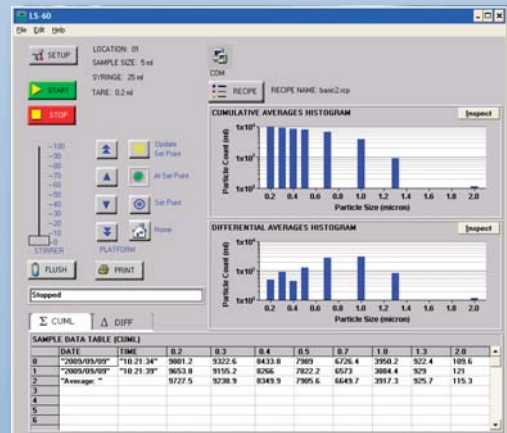
[www.golighthouse.com](http://www.golighthouse.com)

### Features:

- ★ 0.1 µm to 100 µm Size Ranges Available
- ★ Integrated Particle Counter
- ★ 8 Channel Sizes
- ★ Windows™-based Control Software
- ★ Sample Volumes from 1mL to 1 Liter
- ★ Syringe Size Options: 10 and 25 mL
- ★ Precise Syringe Pump Flow Control
- ★ Stainless Steel Enclosure
- ★ Built-in Magnetic Stirrer
- ★ Maximizes Sample Repeatability
- ★ Small Footprint
- ★ RS-485 MODBUS
- ★ Designed for Reliability

### Benefits:

- ★ 2 Year Warranty
- ★ Easy to Install in Limited Space
- ★ Cost Effective Operation
- ★ Proven Data Integrity
- ★ Low Cost of Ownership



LS-60 Main Screen View



**Specifications:**

<b>Size Range:</b>	0.1 - 0.5 µm; 0.2 - 2.0 µm; 0.3 - 3.0 µm; 0.5 - 100 µm
<b>Channel Thresholds:</b>	0.1, 0.15, 0.2, 0.25, 0.3, 0.35, 0.4, 0.5µm; 0.2, 0.3, 0.4, 0.5, 0.7, 1.0, 1.3, 2.0µm; 0.3, 0.5, 0.7, 1.0, 1.3, 2.0, 2.5, 3.0µm; 0.5, 1.0, 2.0, 5.0, 10.0, 25.0, 50.0, 100.0µm
<b>Number of Channels:</b>	8
<b>Flow Rate:</b>	60 mL per minute
<b>Laser Source:</b>	Laser Diode
<b>Calibration:</b>	NIST Traceable
<b>Syringe Sizes:</b>	10mL, 25mL
<b>Maximum Sample:</b>	1 liter
<b>Communication Modes:</b>	RS-485 MODBUS
<b>Wetted Parts:</b>	Teflon (PFA), Quartz, Kalrez, Kel F, Polypropylene
<b>Stirrer:</b>	Magnetic, Adjustable Speed
<b>Connectors:</b>	RJ45
<b>Supporting Software:</b>	LS-60 Software
<b>Enclosure:</b>	Stainless Steel
<b>Power:</b>	24 VDC
<b>Dimensions:</b>	12.875"(l) x 8.75"(w) x 14.75"(h) [ 32.7 x 22.2 x 37.5cm]
<b>Weight:</b>	20.5 lbs (9.3kg)

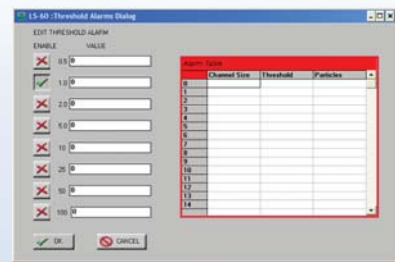
**Environmental Conditions:**

**Operating:** 50°F to 104°F (10°C to 40°C) / 20% to 95% non-condensing  
**Storage:** 14°F to 122°F (-10°C to 50°C) / Up to 98% non-condensing

**Accessories:**

**Included:** Operating Manual on CD; LS-60 Software; Power Supply; Flow Cell Cleaning Solution and Brush; Cable; RJ-45 to DB9 Adapter; Sample Tubing; Nut and Ferrule Kit; 500mL Beaker; Magnetic Stir Bar.

**Optional:** Printed Operating Manual; 10mL Syringe; 5-piece Beaker Set (50, 100, 250, 600, 1000mL Beakers); Carrying Case with Wheels; Certificate of Origin.



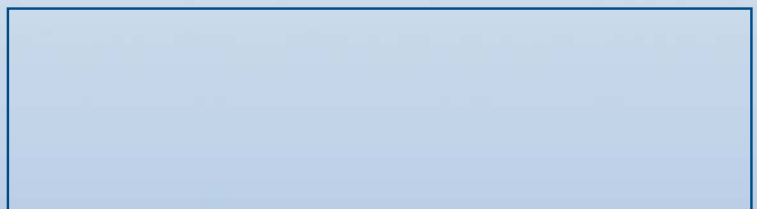
**LS-60 Setup Screens**

Manufactured by:



www.golighthouse.com  
info@golighthouse.com

Distributed by:



Tel: 800 945 5905 (Sales and Service)  
510 438 0500 (Outside of USA)