



LS-20v.1 Liquid Sampler

The **Lighthouse LS-20v.1 Liquid Sampler** has an integrated syringe sampler and optical particle counting system. Its easy-to-use Windows™ based software interface is designed to meet the international regulatory EP and JP, as well as USP 788, requirements.

Following a quality standard of reliability and dependability, Lighthouse Worldwide Solutions developed the **LS-20v.1 Liquid Sampler** using the latest in laser optical particle counter technology.

The **LS-20** uses a high accuracy syringe pump flow control system and a high sample volume sensor. With sample volumes adjustable from 1 to 1000 milli Liters (10 mL syringe), it is a perfect tool for multiple batch sampling applications.

The graphical user interface makes the **LS-20** easy to configure and operate. Data is automatically recorded from up to eight particle size channels ranging from 1.0 to 50.0 microns and is easily available in graph and tabular form in real time. All reports can be preconfigured and printed at the touch of a button.

**Designed and built by
Lighthouse - a name you can trust.**

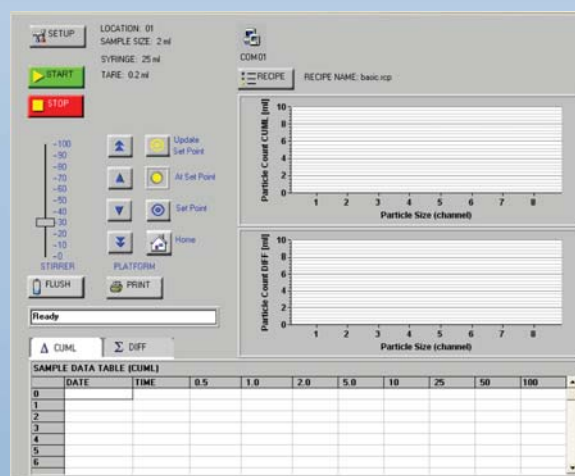
www.golighthouse.com

Features:

- ★ 1.0 µm to 50 µm Size Range
- ★ Integrated "Light Obscuration" Particle Counter
- ★ Software Designed for 21 CFR part 11
- ★ International Regulatory EP & JP Reports
- ★ USP 788 Reports
- ★ Sample Volumes from 1 to 1000 milli Liters
- ★ Preconfigured USP 788 Recipes
- ★ Precise Syringe Pump Flow Control
- ★ Stainless Steel Enclosure
- ★ Built-in Magnetic Stirrer
- ★ Automated Sample Handling Maximizes Repeatability
- ★ Compact Footprint

Benefits:

- ★ 2 Year Limited Warranty
- ★ Industry's Easiest and Fastest Out-of-Box Set Up and Integration
- ★ Excellent ROI
- ★ Proven Data Integrity
- ★ Industry's Lowest Cost of Ownership



LS-20 Main Screen View



Specifications:

Size Range:	1.0 - 50.0 μm
Channel Thresholds:	1.0, 2.0, 3.0, 5.0, 10.0, 15.0, 25.0, 50.0 μm
Flow Rate:	20 mL per minute
Light Source:	Laser Diode
Calibration:	NIST Traceable
Syringe Sizes:	10mL, 25mL
Maximum Sample:	1 liter
Communication Modes:	RS-232
Wetted Components:	Teflon (PFA), Quartz, Kalrez, Kel F, Polypropylene
Stirrer:	Magnetic, Adjustable Speed
Connectors:	RJ45
Supporting Software:	LS-20 Software
Enclosure:	Stainless Steel
Power:	100-240VAC, 24 VDC to LS20
Dimensions:	12.875"(l) x 8.75"(w) x 14.75"(h) [32.7 x 22.2 x 37.5cm]
Weight:	20.5 lbs (9.3kg)

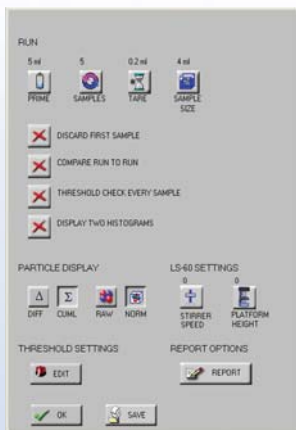
Environmental Conditions:

Operating: 50°F to 104°F (10°C to 40°C) / 20% to 95% non-condensing
Storage: 14°F to 122°F (-10°C to 50°C) / Up to 98% non-condensing

Accessories:

Included: Operating Manual on CD; LS-20 Software; Power Supply; Flow Cell Cleaning Solution and Brush; Cable; RJ-45 to DB9 Adapter; Sample Tubing; Nut and Ferrule Kit; 500mL Beaker; Magnetic Stir Bar.

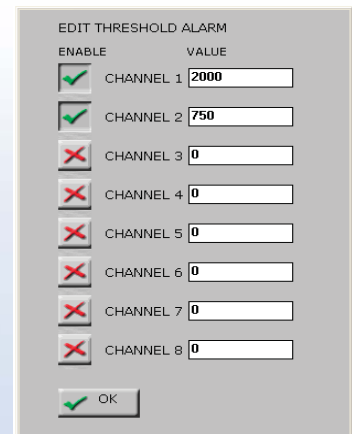
Optional: Printed Operating Manual; 10mL Syringe; 5-piece Beaker Set (50, 100, 250, 600, 1000mL Beakers); Carrying Case with Wheels; Certificate of Origin.



Recipes Setup Screen



Report Setup Screen



Alarms Setup Screen

Manufactured by:



www.golighthouse.com
info@golighthouse.com

Tel: 800 945 5905
510 438 0500 (Outside of USA)

Distributed by:

